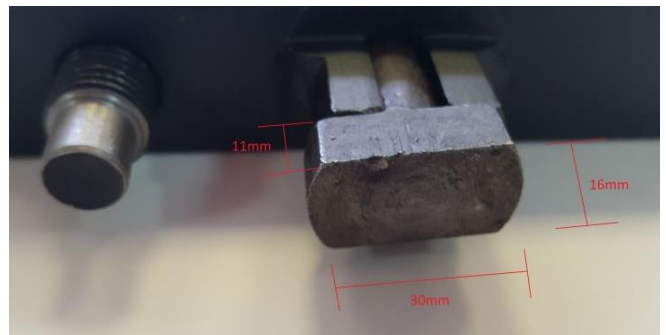


Key Carriageway 2A (D Key)



A "D" shaped lifting key for use on E type and units type covers of square and rectangle shape. The key incorporates an adjustable locking nut which bears against the frame to lift the cover.

PN	MODEL	PACKG
E3270	Key Carriageway 2A (D Key)	1



Features & Benefits

- An adjustable locking nut which bears against the frame to lift the cover
- Supplied individual, but used in pairs
- Colour: Black
- Dimensions: 260mm x 170mm
- Nutt dimensions: 11mm x 30mm x 16mm

A "D" shaped lifting key for use on E type and units type covers of square and rectangle shape. The key incorporates an adjustable locking nut which bears against the frame to lift the cover.